

BASS DRUM VARIATIONS 1

DRUM NOTATION KEY

Snare Drum Bass Drum Hi Tom Mid Tom Floor Tom Ghost Note Cross Stick Closed Hi-Hat Open Hi-Hat Pedal Hi-Hat Ride Cymbal Ride Bell Crash Cymbal Cowbell

BASS DRUM VARIATION 1

BASS DRUM VARIATION 2

BASS DRUM VARIATION 3

BASS DRUM VARIATION 4

BASS DRUM VARIATION 5

BASS DRUM VARIATION 6

Musical notation for Bass Drum Variation 6. It features a single staff with a treble clef and a 4/4 time signature. The notation consists of two measures, each containing a sequence of four eighth notes. Above the notes, there are two thick horizontal bars, one for each measure, with four 'x' marks positioned above each bar, indicating the timing of the drum hits.

BASS DRUM VARIATION 7

Musical notation for Bass Drum Variation 7. It features a single staff with a treble clef and a 4/4 time signature. The notation consists of two measures, each containing a sequence of four eighth notes. Above the notes, there are two thick horizontal bars, one for each measure, with four 'x' marks positioned above each bar, indicating the timing of the drum hits.

BASS DRUM VARIATION 8

Musical notation for Bass Drum Variation 8. It features a single staff with a treble clef and a 4/4 time signature. The notation consists of two measures, each containing a sequence of four eighth notes. Above the notes, there are two thick horizontal bars, one for each measure, with four 'x' marks positioned above each bar, indicating the timing of the drum hits.

BASS DRUM VARIATION 9

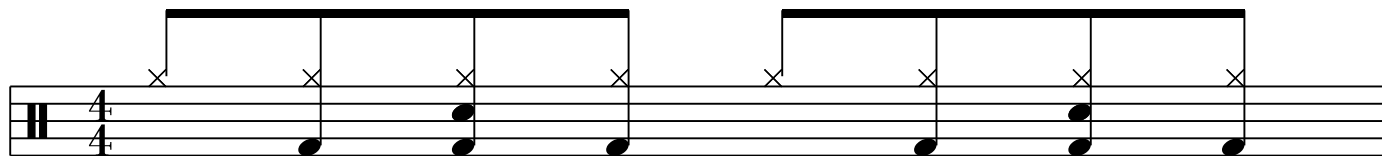
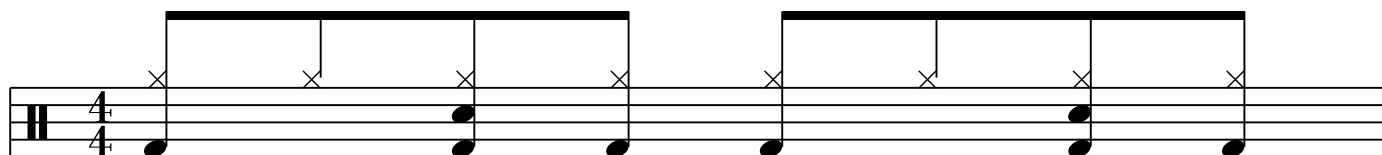
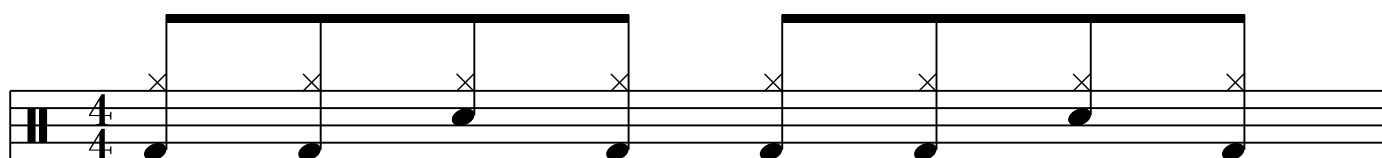
Musical notation for Bass Drum Variation 9. It features a single staff with a treble clef and a 4/4 time signature. The notation consists of two measures, each containing a sequence of four eighth notes. Above the notes, there are two thick horizontal bars, one for each measure, with four 'x' marks positioned above each bar, indicating the timing of the drum hits.

BASS DRUM VARIATION 10

Musical notation for Bass Drum Variation 10. It features a single staff with a treble clef and a 4/4 time signature. The notation consists of two measures, each containing a sequence of four eighth notes. Above the notes, there are two thick horizontal bars, one for each measure, with four 'x' marks positioned above each bar, indicating the timing of the drum hits.

BASS DRUM VARIATION 11

Musical notation for Bass Drum Variation 11. It features a single staff with a treble clef and a 4/4 time signature. The notation consists of two measures, each containing a sequence of four eighth notes. Above the notes, there are two thick horizontal bars, one for each measure, with four 'x' marks positioned above each bar, indicating the timing of the drum hits.

BASS DRUM VARIATION 12**BASS DRUM VARIATION 13****BASS DRUM VARIATION 14****BASS DRUM VARIATION 15**