

# HI-HAT VARIATIONS 1

## DRUM NOTATION KEY

Snare Drum   Bass Drum   Hi Tom   Mid Tom   Floor Tom   Ghost Note   Cross Stick   Closed Hi-Hat   Open Hi-Hat   Pedal Hi-Hat   Ride Cymbal   Ride Bell   Crash Cymbal   Cowbell

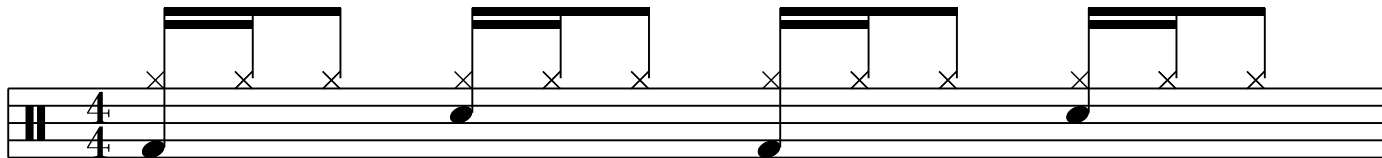
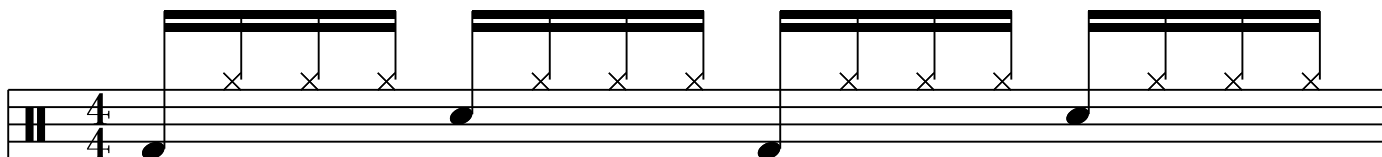
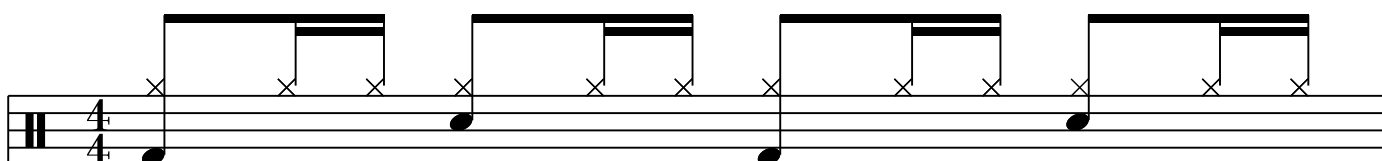
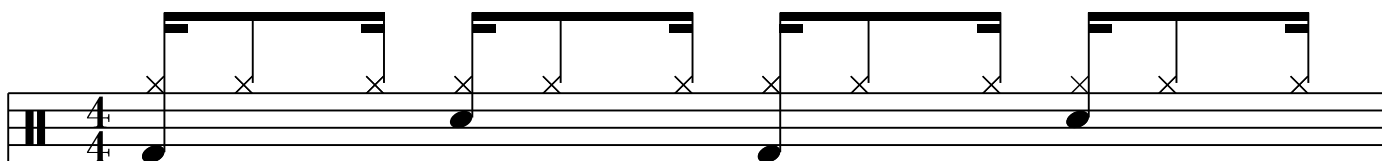
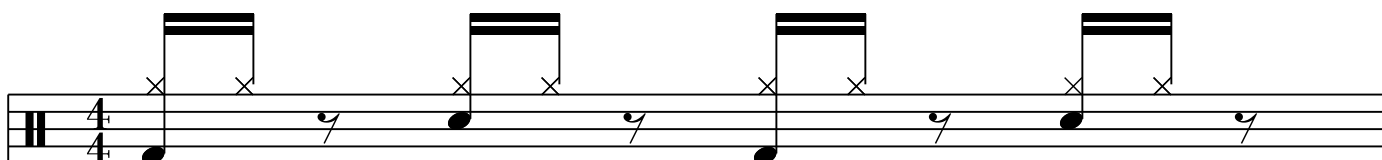
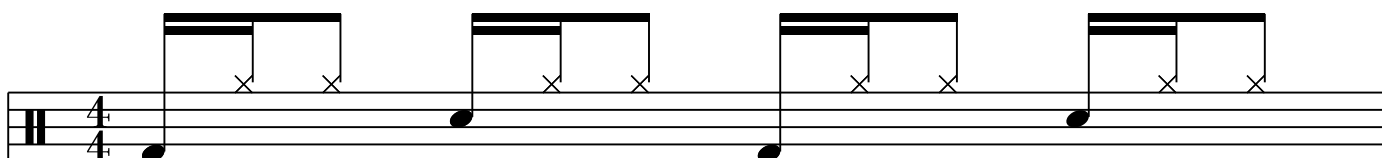
### HI-HAT VARIATION 1

### HI-HAT VARIATION 2

### HI-HAT VARIATION 3

### HI-HAT VARIATION 4

### HI-HAT VARIATION 5

**HI-HAT VARIATION 6****HI-HAT VARIATION 7****HI-HAT VARIATION 8****HI-HAT VARIATION 9****HI-HAT VARIATION 10****HI-HAT VARIATION 11**

**HI-HAT VARIATION 12**

Musical notation for HI-HAT VARIATION 12. It features a single staff with a treble clef and a 4/4 time signature. The notation consists of four measures. Each measure contains a dotted quarter note on the bottom line of the staff, followed by a pair of eighth notes on the top line. Above the eighth notes is a thick horizontal bar representing the hi-hat. Small 'x' marks are placed on the top line of the staff, one for each eighth note, indicating the hi-hat is closed during these notes.

**HI-HAT VARIATION 13**

Musical notation for HI-HAT VARIATION 13. It features a single staff with a treble clef and a 4/4 time signature. The notation consists of four measures. Each measure contains a dotted quarter note on the bottom line of the staff, followed by a pair of eighth notes on the top line. Above the eighth notes is a thick horizontal bar representing the hi-hat. Small 'x' marks are placed on the top line of the staff, one for each eighth note, indicating the hi-hat is closed during these notes.

**HI-HAT VARIATION 14**

Musical notation for HI-HAT VARIATION 14. It features a single staff with a treble clef and a 4/4 time signature. The notation consists of four measures. Each measure contains a dotted quarter note on the bottom line of the staff, followed by a pair of eighth notes on the top line. Above the eighth notes is a thick horizontal bar representing the hi-hat. Small 'x' marks are placed on the top line of the staff, one for each eighth note, indicating the hi-hat is closed during these notes. There are also '7' symbols on the staff between the dotted quarter notes, likely representing a specific rhythmic pattern or a typo for a note.

**HI-HAT VARIATION 15**

Musical notation for HI-HAT VARIATION 15. It features a single staff with a treble clef and a 4/4 time signature. The notation consists of four measures. Each measure contains a dotted quarter note on the bottom line of the staff, followed by a pair of eighth notes on the top line. Above the eighth notes is a thick horizontal bar representing the hi-hat. Small 'x' marks are placed on the top line of the staff, one for each eighth note, indicating the hi-hat is closed during these notes.